

# Terra-6

*Terra-6 is the first commercially available product in the market that visually shows projects of an enterprise based on their geographic location.*

## Key Features

### Locating Projects on a Map

- Projects are geo-coded using four Primavera Project-level user-defined fields.
- Ability to add a new project to a location on a map
- Ability to tag existing non-geocoded projects using a conversion facility in addition to locating them on the map
- Ability to store a series of locations (e.g. markers on a highway) to a project

### View by Portfolio

- View all projects by Portfolio

## Benefits

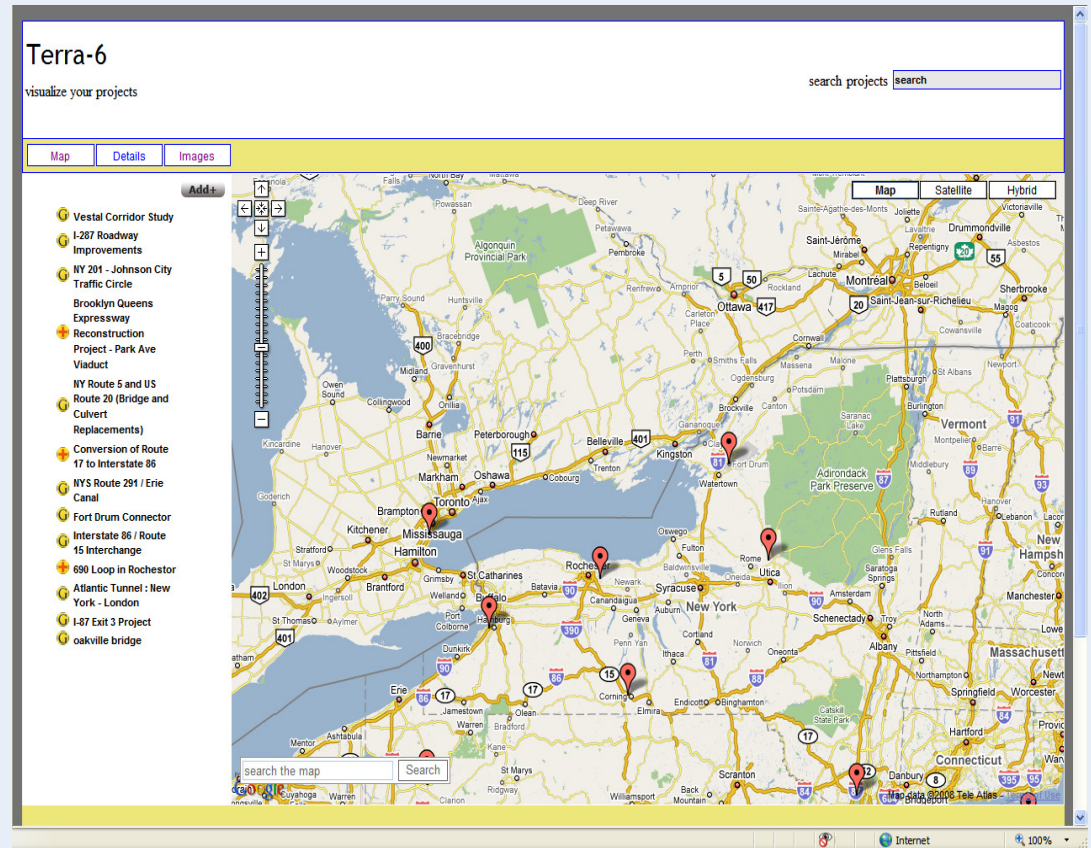
### Business Users:

- Improved productivity
- 'Visualize' projects on the ubiquitous google-maps interface
- Project popup is completely customizable with virtually any widget (weather, rss feeds) to a project popup.

### IT Users:

- Plug seamlessly into P6 tech stack

## Terra-6



### P6-Google Maps Mashup

One of the most critical aspects of running an enterprise project and portfolio management system is to visually show projects and its statuses in a user-friendly manner.

**Terra-6 offers a first-of-its-kind solution built on top of the Primavera P6 API that lets users visualize their projects on a google map.**

A single click minimal installation which will not require separate infrastructure costs than what you have incurred for the P6 installation. Zero-implementation time for Terra-6. Easy to customize with only requirement of knowing HTML and Javascript to add functionality to Terra-6.

*Note: Google maps API license is required to run Terra-6 if hosted internally.*

### Powered by

*Gaea is an enterprise solutions company that focuses on maximizing the ROI of enterprise software. We build Gap Applications (G-apps) that complement the core capabilities in Primavera, provide technical consulting and intergration services to Primavera's clients and enable best-in-class business processes helping our customers to reap the optimal ROI from their enterprise IT assets. For more information please email: [terra6@gaeaglobal.com](mailto:terra6@gaeaglobal.com)*

### Delivered by PCF Ltd.

*PCF believes passionately that a picture paints a thousand words - at least. And it's never been more true than today, where management are constantly at risk of being swamped by the volume of data produced within their organizations. PCF has been a Primavera Technology Partner since 2003, and is committed to providing solutions that integrate well with Primavera software. [terra6@pcf ltd.co.uk](mailto:terra6@pcf ltd.co.uk)*