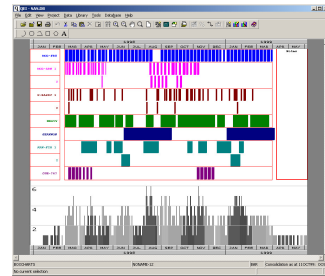
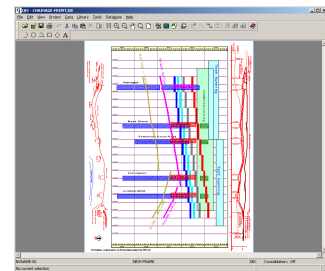


Options and Customisation

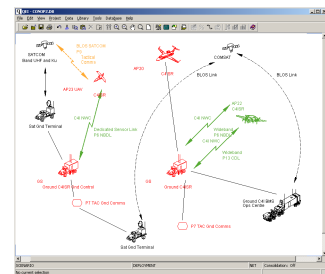


In addition to the standard functionality described on the previous pages, OEI Exec can be extended with a number of optional modules providing additional specialist visualisation capabilities.

BoxCharts The top screenshot at left shows an example BoxChart, in which activities are drawn against a timescale and grouped into zones. Zones can be defined to correspond to many different properties, including distinct values of a code/UDF, use of particular resources, or position within the WBS.



Time Chainage Extensively used on linear projects such as pipelines, railways and roads, time chainage charts provide a simple way to visualise where work is taking place at any time. Originally developed for TransManche Link during construction of the Channel Tunnel, PCF's time chainage module provides an extremely versatile environment for generating and maintaining these charts, while remaining fully integrated within the standard OEI Exec system.



It is also possible to extend the system using the built-in macro language to provide a completely customised solution that integrates tightly into any existing environment. The bottom screenshot shows a dashboard created by a custom OEI application in which icons representing various components of a military communications network are coloured based on their deliverability, which in turn is derived from contractor programme information imported into the system.

More examples of custom systems and client references can be found on the PCF website.

Summary of Features

- | | |
|---|---|
| <p>Database Provides primary and secondary breakdown structures, and custom data fields on many objects. Primavera EPS/WBS is mapped to primary structure on import, and Activity Codes/User Defined Fields are mapped automatically to custom data fields.</p> | <p>Calendar Up to 256 working calendars can be defined and applied to activities, relations and resources, or used as a backdrop for charts. All calendars used by projects imported from Primavera are automatically transferred during import.</p> |
| <p>Interfaces Import and export data between OEI Exec and other systems, with import wizards for both Primavera (P3, P5 and P6 supported) and Microsoft Project.</p> | <p>Graphics Create or import graphics and store in shareable symbol libraries. Annotate charts with text or graphics.</p> |
| <p>Activities All key information including baseline, schedule and progress data is imported from Primavera.</p> | <p>System 32/64bit Windows (Win2K – Windows 7) with at least 256Mb RAM and 30Mb free disk space.</p> |
| <p>Relations All standard relation types supported; relations may also have leads/lags and working calendars associated with them.</p> | <p>Output Any output device supported by Windows. Charts can also be published as web pages for use on an intranet or the Internet.</p> |
| <p>Resources Supports 2 level resource group/resource model, with Primavera resources mapped automatically to Labour, NonLabour and Material groups. Primavera roles are treated as resources and imported as well. Alternate resource groups can also be defined.</p> | <p>Licensing Sold as a single user system to be installed on one specified PC, or a floating concurrent user licence. Discounts are available for Government institutions, educational establishments and registered charities.</p> |

To request your free trial of OEI Exec, please visit www.pcf ltd.co.uk or contact PCF for details of your local representative.



PCF Ltd
41 Marlowes
Hemel Hempstead
Hertfordshire HP1 1LD
United Kingdom

Tel: (+44) 1442 355100
Fax: (+44) 1442 355001
Web: www.pcf ltd.co.uk

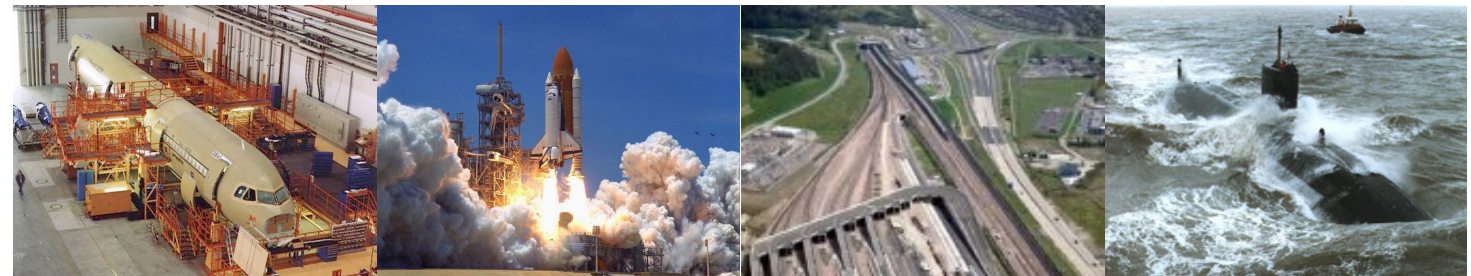
BoxCharts, LinearPlus and OEI Exec are trademarks of PCF Limited. All other trademarks and registered trademarks are the property of their respective owners and are acknowledged as such. Copyright © 2010 PCF Limited.

OEI Exec

Graphical Reports and Modelling for Primavera



Experience and Innovation



At PCF we have always believed that a picture paints a thousand words. And it's never been truer than today, when management are at risk of being swamped by the volume of data produced within the organisation, and tight deadlines limit the time available to identify and work around potential problems. For over 20 years, we have enabled our customers to maximise the value of their investment in existing IT systems by providing tools to generate clear and comprehensible information, using graphics to turn the raw data into valuable business insights.

From the beginning, PCF has been focused on addressing the needs of organisations managing large projects across a wide variety of sectors, and we have been developing software that integrates with Primavera's product range since the early 1990s. As a technical partner since 2003 we remain fully committed to enabling our customers to maximise the value of their investment in Primavera technologies, and strive to ensure that the transfer of information between products is as straightforward as possible.

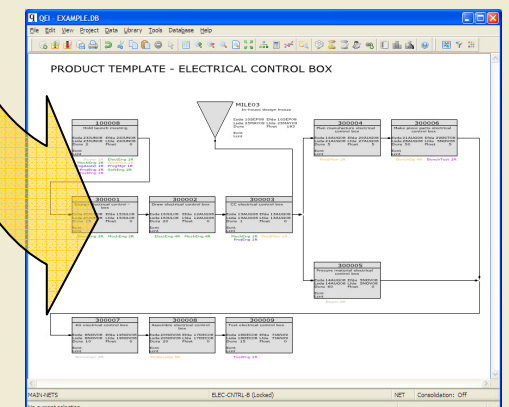
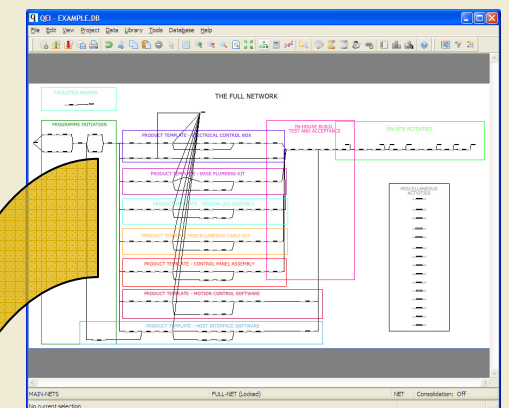
What is the OEI Exec difference?

As a company with a background in graphics, we view project management from a different perspective. We understand the frustrations of grid-based Gantt charts that won't allow you to see what you want to see, of PERT charts that just don't lay out in a way that makes sense to the project team, or applications that insist on imposing their methodology on your work. And we've lost count of the number of project reports we've seen built in spreadsheets to try to work around these issues..

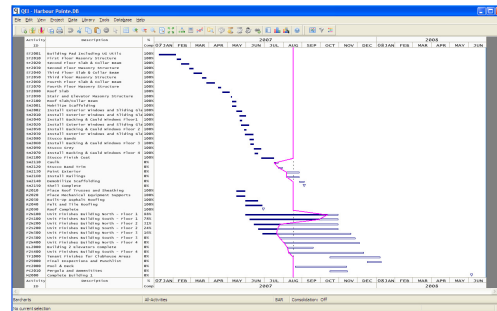
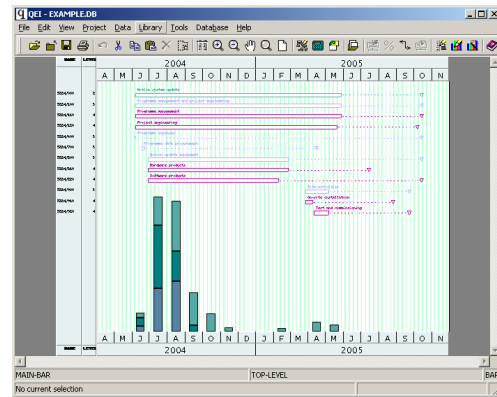
In traditional applications, you typically have a number of ways to view your data – Gantt, PERT or WBS for example. Within each view, you can apply filtering to restrict the data displayed, define sorting or layout to control the ordering of the data, and use formatting rules to set colours and styles. OEI Exec does all this and more besides, using virtual "sheets of paper" that allow you to spread your data across as many versions of each view as you want, structured in any way you want – splitting up the logic of your project across separate work package views, for example.

And it doesn't end there – you can navigate through the logic from one view to the next using simple mouse clicks, add links to other views or external documents, or embed graphics or photos. OEI Exec is not just a reporting tool, either - it works with a local copy of your projects, so you can also use it to perform "what if" analysis without affecting the data in your planning system.

Free yourself! With OEI Exec, your reporting is limited only by your imagination.



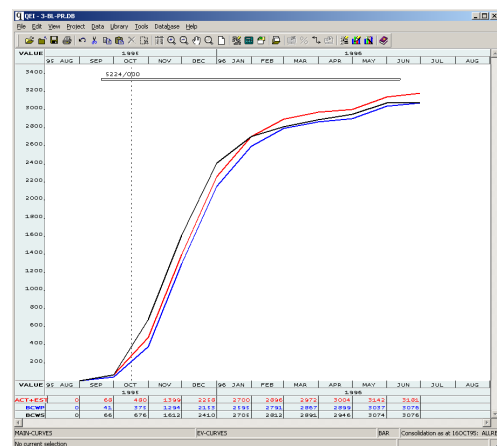
Gantt Charts and Histograms



OEI Exec provides many options when it comes to creating Gantt charts. Key features include:

- A sheet can display activities, resource loads, or both
- A Gantt chart can contain any arbitrary selection of activities
- Resource loads can be displayed as curves or histograms derived from baseline, early or late dates. Histograms can be stacked. Intervals are defined by the user and interval values can be displayed below the chart.
- Activity data can be displayed alongside the bar, or in user definable columns on either side of the chart
- Bars can be styled and coloured based on a wide variety of criteria
- The time now line can optionally be displayed as a “birds beak” to highlight progress deviations
- Relationships can be displayed if desired, and routed automatically or manually to improve readability
- Additional annotation or graphics can be added to the sheet

Earned Value and Performance



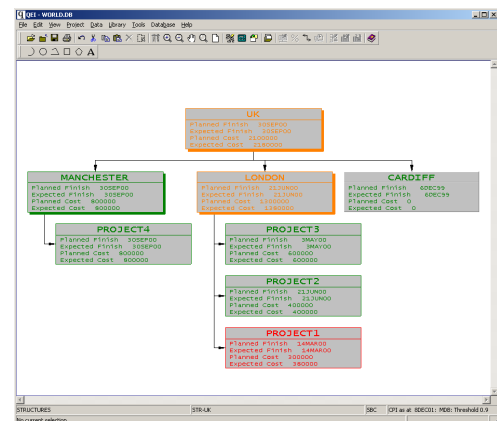
OEI Exec can calculate earned value parameters derived from any resource or group of resources, at any point in any breakdown structure. These can be in terms of quantities or costs, with ACWP derived from actual quantities x rates or actual costs. The system can automatically generate the following parameters:

ACWP	Budget at Completion
BCWP	Estimate to Complete
BCWS	Planned EV % Complete
CPI	Actual EV % Complete
SPI	

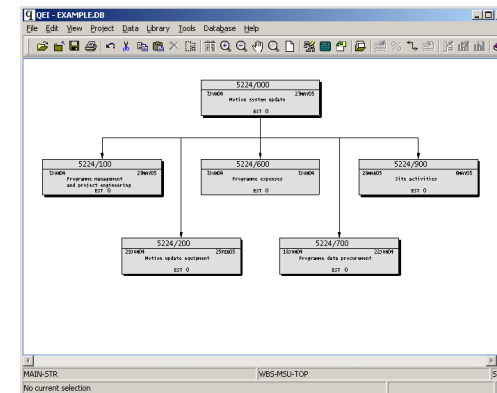
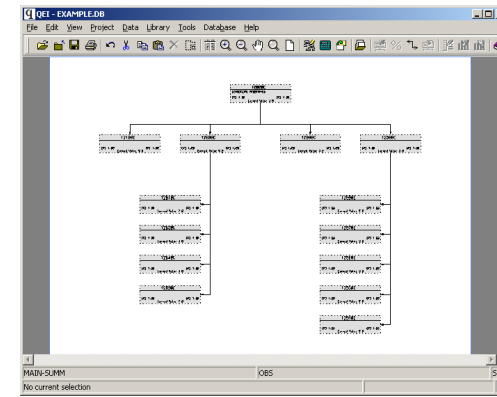
Earned value and performance data can be displayed in a wide variety of ways. These include:

- traditional S curves on Gantt charts
- values in boxes on PERT or Structure charts

In addition, it is possible to define performance thresholds based on schedule and/or cost indices, and apply colouring to activities based on the values of these indices for each visible activity on the sheet.



Structure Charts



Unlike Primavera, OEI Exec makes no distinction between WBS elements and activities which makes it simple to create charts that show any arbitrary section of the overall project structure. In addition, it is possible to create any number of alternate breakdown structures and display charts of these as well.

Key features of structure charts include:

- Chart layout can be performed manually or using one of a number of automatic layout styles
- The layout and content of the data within the boxes is user definable
- User definable box styles can be applied to each box individually, or a standard set applied to the sheet as a whole
- User definable colours can be applied to each box individually, or all boxes can be coloured based on float or earned value performance
- Additional annotation or graphics can be added to the sheet

Graphics, Printing and Publishing



on screen



printed using template

To ensure that your output contains all the information you require OEI Exec provides a complete range of functions for annotating or embellishing any sheet. These include:

- Add text, graphics or image files
- Control over drawing order and layering
- Attachment of graphics to activities so that the graphics move with the activity
- User definable symbols that can be used to create hyperlinks between sheets, or to open external applications or documents
- Import 2D CAD graphics from DXF files

Printed output can be customised through the creation of user-definable templates containing company logos, standard distribution and reproduction clauses, and information derived from the project being printed.

The contents of any sheet can also be published as a web page viewable on an intranet or the internet. The publishing process also uses customisable templates to provide navigation and additional project related information.