

# QEI Exec BoxCharts™

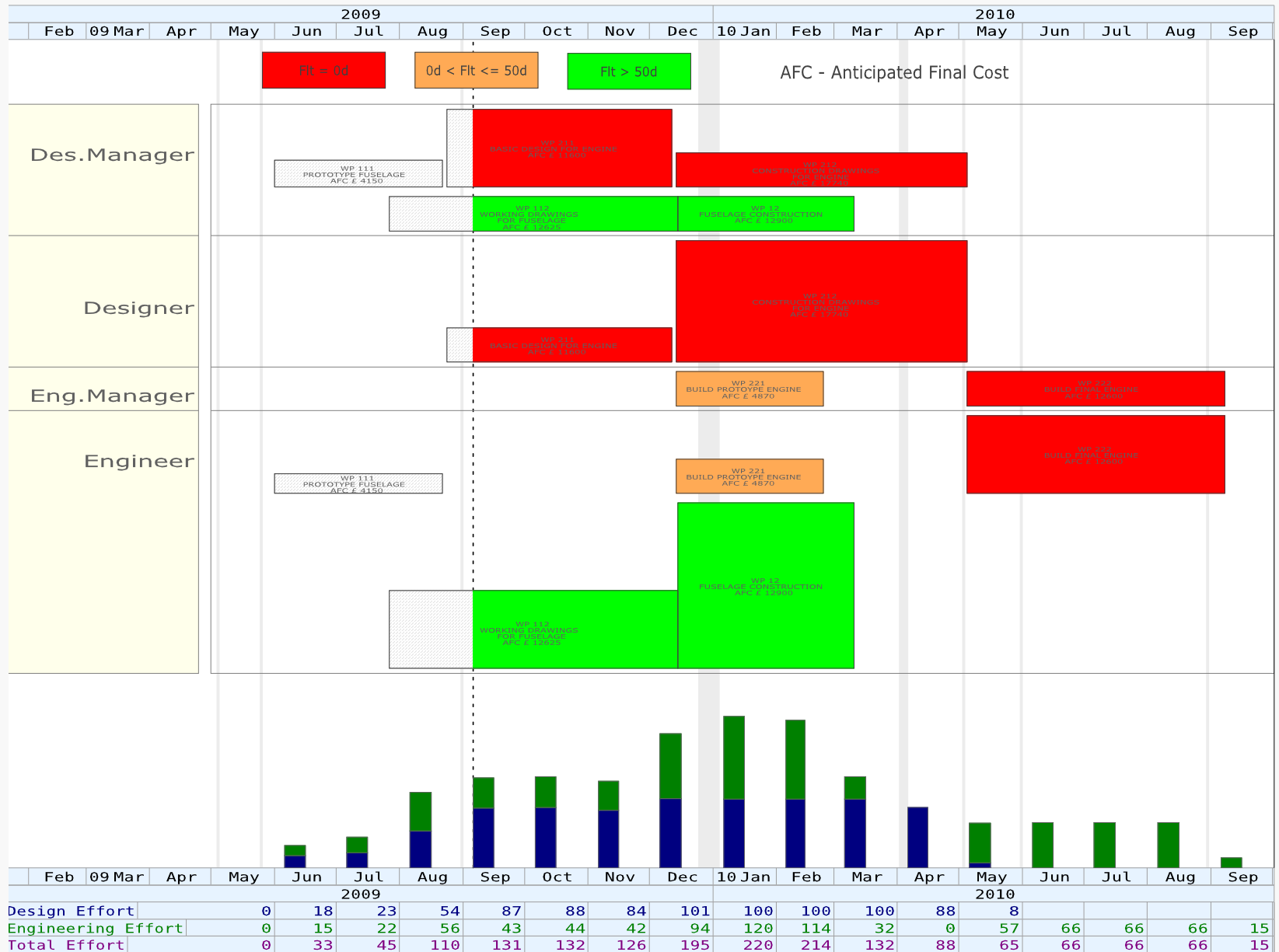
Still struggling to get Gantt charts to produce the right views for you?

Then consider QEI Exec BoxCharts™ as an alternative.

For some applications traditional Gantt charts are sufficient. However, if you need to break down activities by zone, code values, resource types or WBS/OBS then you need BoxCharts™.

This is available as an additional module that integrates with your existing QEI Exec system.

The example shown give you some idea of the capabilities – please contact us for further information.

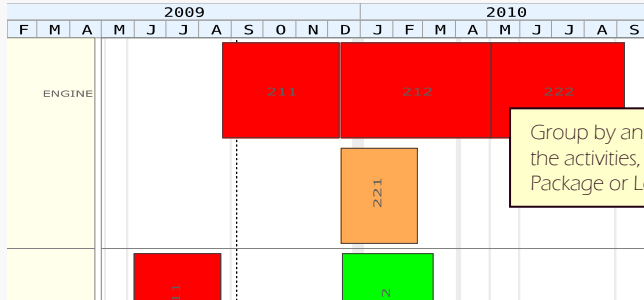
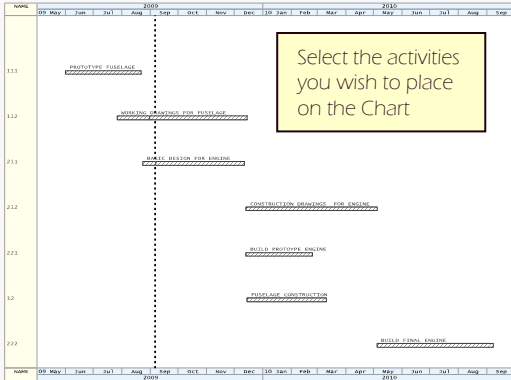


The above chart shows the Work Packages sized according to the Load of each resource.

Choose how you wish to group these activities.

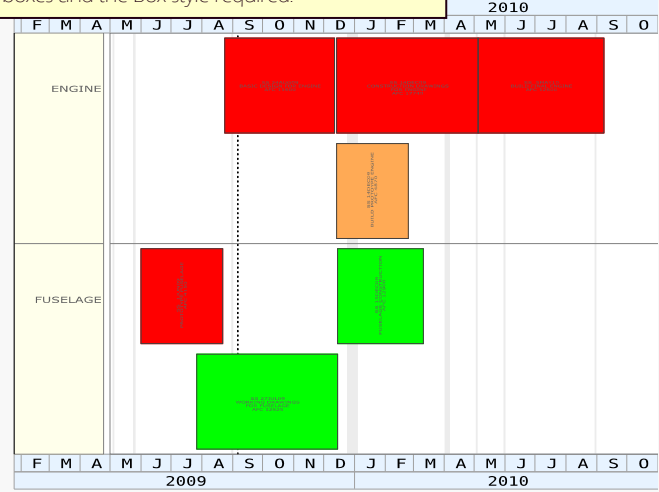


Select the activities you wish to place on the Chart



Group by an attribute of the activities, eg. Work Package or Location

Choose the information you wish to see in the boxes and the Box style required.



You can also choose to have the Boxes sized, based on the resource quantity used by the activity, eg No of people or Total Cost.

### Technical Details

Seamless integration with your existing OEI Exec system, allowing Oracle Primavera data to be displayed as BoxCharts.

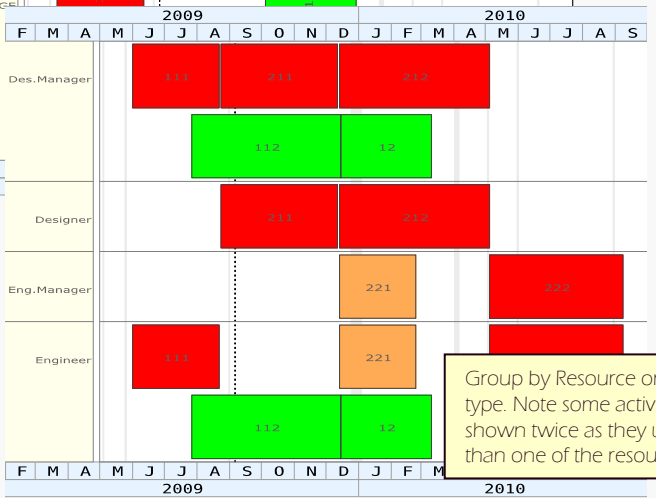
All standard Gantt chart functions available in BoxChart views.

BoxChart Module License provides BoxChart functionality to all Licensed users.

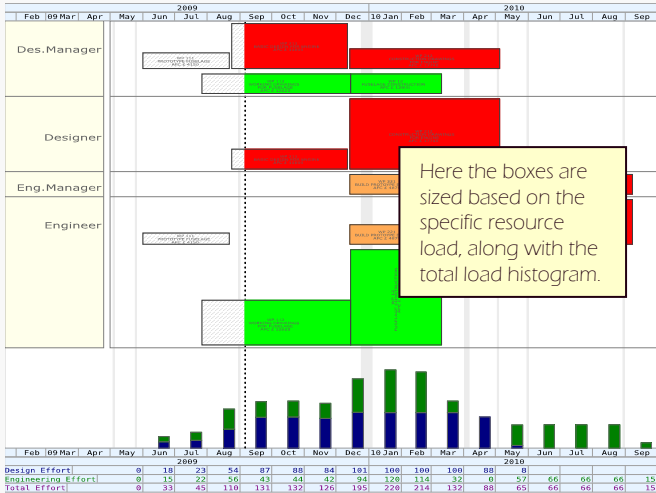
### For Further Information

PCF Ltd, 41 Marlowes, Hemel Hempstead Hertfordshire HP1 1LD, UK

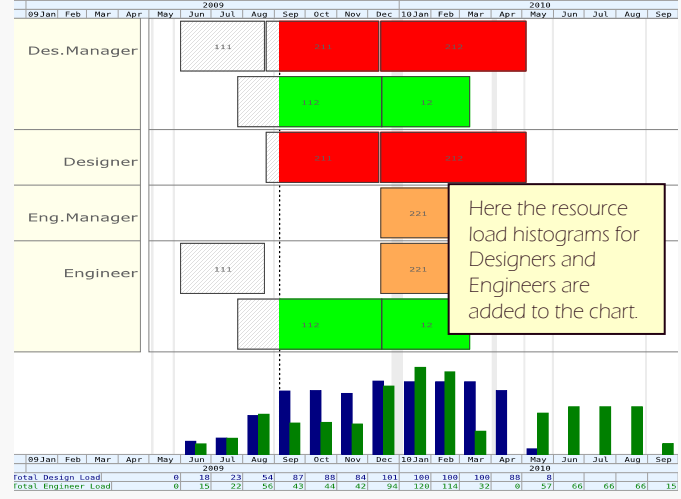
Tel: (+44) 1442 355100 Fax: (+44) 1442 355001 <http://www.pcfld.co.uk>



Group by Resource or Resource type. Note some activities will be shown twice as they use more than one of the resources chosen.



Here the boxes are sized based on the specific resource load, along with the total load histogram.



Here the resource load histograms for Designers and Engineers are added to the chart.