

Connecting LinearPlus/QEI to P3E

1: Principles

The first point to note is that you need a DSN connected directly to the P3E database, bypassing the SDK if you have it installed. This is because a direct connection provides much better performance, and also because the SDK (even for v5) still does not allow you to extract the calendar details from P3E.

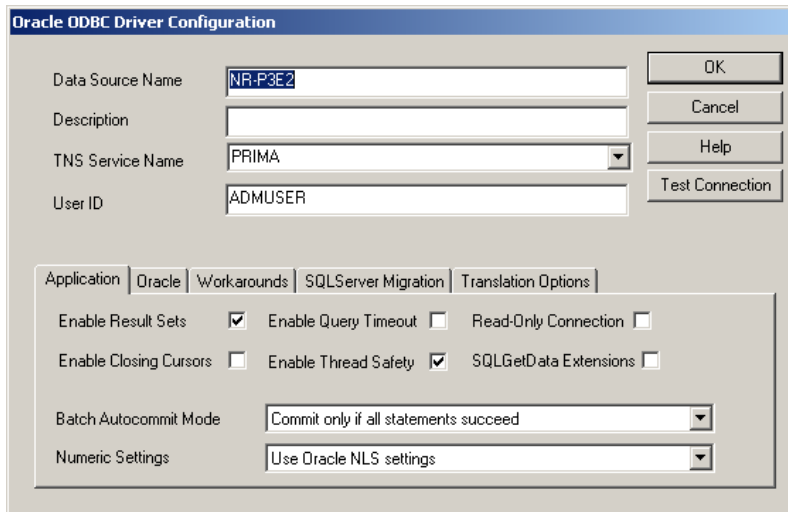
P3E offers a choice of 2 databases, Oracle or SQL Server. Standalone installations from v5.0 onwards use a stripped down version of SQL Server known as MSDE; note that the "standalone" connection option in LinearPlus/QEI import wizard refers to the Interbase database used by v4.x for standalone P3E systems and should not be used.

The following sections outline the process of setting up a DSN that attaches directly to the database. If you are not connecting to a standalone MSDE database you will need to get assistance from your IT or network support staff to provide the necessary access and user/password information.

In all cases, you will need to create a new system DSN. To do this, go to the Start Menu and then Settings. Select Control Panel, Administrative Tools, then Data Sources (ODBC). Select the System DSN tab and click the Add... button.

2: Oracle native ODBC driver

The ODBC driver supplied by Oracle will be listed as "Oracle in OraHome92" or similar in the list of available drivers.



You need to specify the TNS name which identifies the database containing the P3E data – this is defined in a file on your PC located somewhere like

D:\oracle\ora92\network\ADMIN

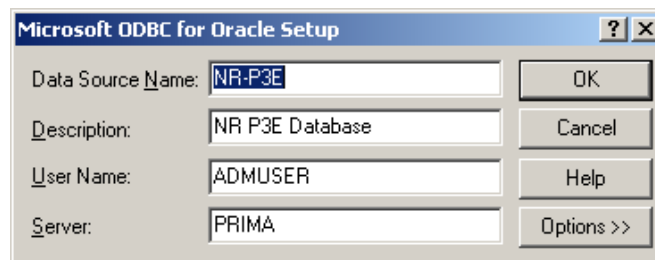
which needs to contain something like this (example shown for the DSN above, where a machine with address 81.187.166.67 hosts the database which is identified as PRIMA).

```
PRIMA =
  (DESCRIPTION =
    (ADDRESS_LIST =
      (ADDRESS = (PROTOCOL = TCP) (HOST = 81.187.166.77) (PORT = 1521))
    )
    (CONNECT_DATA =
      (SERVICE_NAME = PRIMA)
    )
  )
```

You will need to connect to the database with an Oracle user identifier (not a P3E user name) with sufficient privileges to read all the data within the P3E database. By default this is ADMUSER.

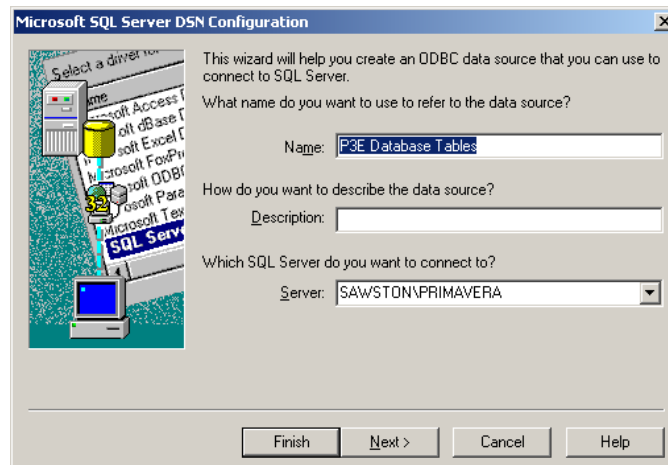
3: Microsoft ODBC for Oracle

This is very similar in that you provide exactly the same information as that for the native Oracle driver via a slightly different dialog box:

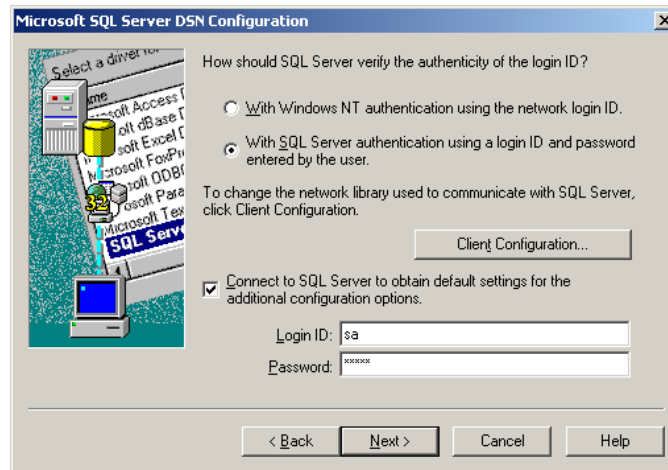


4: SQL Server / MSDE (v5.x or v6.x standalone)

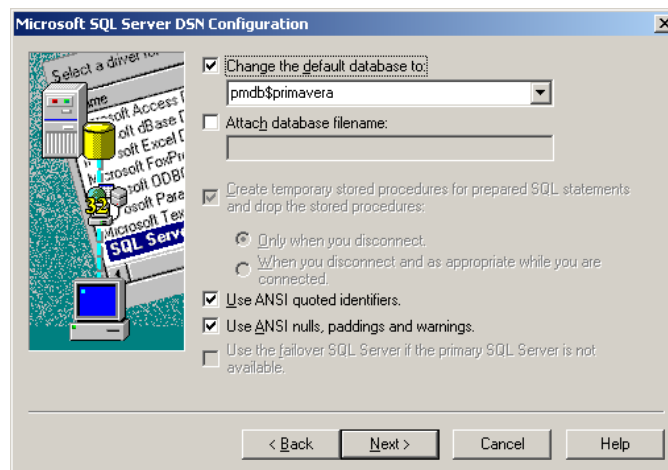
You need to use the SQL Server driver if you have a shared SQL server database, or have installed P3E v5.x or v6.x standalone. This uses a stripped down version of SQL Server called MSDE to hold the data.



This driver is a bit more complicated as it walks you through a wizard. Step 1 (above) requires you to enter the DSN name, an optional description, and the server to which you wish to connect. This is a string in the form <host name>\<database name> where <host name> is the name of your PC, and <database name> is PRIMAVERA. If you are not offered this as an option from the list you can type it in by hand.



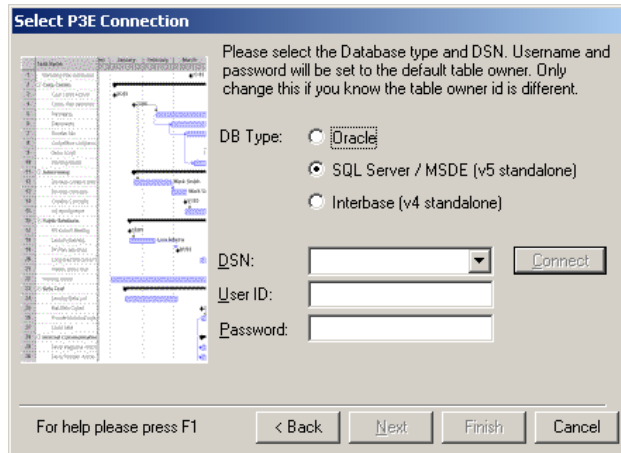
The next step (above) determines how to connect to the database. The simplest way is to connect as the system administrator with user id "sa". The default admin password for v5.x databases is "prima" and for v6.x databases is "Prima123Vera" and the appropriate one should be entered in the bottom field before proceeding to the next step.



On this screen you need to change the default database from "master" to the value shown. You can now click on Next and then Finish to complete the setup. Try testing the connection when you are offered the chance, to ensure it all works.

5: Connecting LinearPlus/QEI to P3E

The Import Data Wizard presents you with a dialog where you select the database connection to use:



If you have an Oracle database, choose Oracle and select the DSN from the list. Unless your system is no longer configured to use the defaults, enter ADMUSER as the user id, ADMUSER as the password, then click Connect.

If you have a SQL Server or MSDE database , choose SQL Server and select the DSN from the list. Unless your system is no longer configured to use the defaults, enter privuser as the user id, privuser as the password, then click Connect.

The Interbase option is only needed for v4 standalone databases and will shortly be dropped.